

G/NEVR/
neo-tech for life

ELiOS

LED Phototherapy and Warming Lamp



The **ELIOS** phototherapy lamp integrates overhead **phototherapy treatment** with servo-controlled heating for newborns.

ELIOS is **designed for flexibility** and can be used **wherever the baby is situated**, eg on a changing table or cradle.

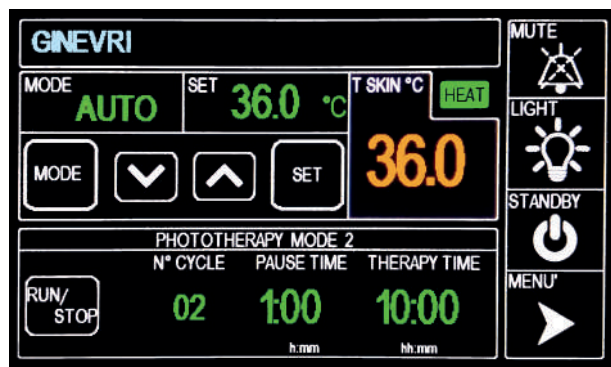
The apparatus consists of an **overhead unit** containing the **phototherapy, illumination and heating elements** mounted on a **height-adjustable stand** for easy deployment.

The **overhead light** includes:

- a **touchscreen control panel**
- **6 blue LEDs** for phototherapy: total max. patient irradiance > 1,500uw/cm²
- **4 white LEDs** for illumination
- **350W radiant-heating quartz tube**
- **skin-temperature probe**

The **touchscreen control panel** allows:

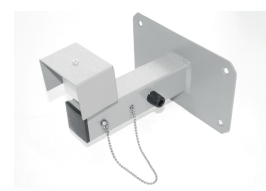
- **servo-controlled** radiant-heating and skin temperature mode
- settings for **manual** thermoregulation mode
- **preheating mode** (thermal power at 30% of max power)
- **phototherapy time-mode**
- timer for **total and remaining hours** of therapy
- **LED lifetime** indicator
- **white-light** switch
- active **acoustic and visual alarms**
- **'Set'** key for settings (avoids **unintentional changes**)



Accessories & Consumables



565 - 11814A73
Sensor probe fixer Gel
Reflect Ø26 & Ø38 (24pcs)



12423A70
Wall support



11730A73
Blue Skin Probes (6pcs)



12423A70
Phototherapy Mask (50pcs)



12172A73
Optical Unit -
Phototherapy and
Illumination Leds (2pcs)



1749
Radiometer RM400

Technical specifications

MPG Class	II B (93/42 CEE e s.m.i.)
Safety	I BF (EN 60601-1)
Power supply	230 Vac; 50-60 Hz 500W max
Display	4.3" color touch screen
Phototherapy Mode 1	6 BLUE POWER LED (425-475nm) allows to set the phototherapy time.
Mode 2	allows to set the phototherapy time, the pause time and number of cycles
Mode 3	allows to carry out phototherapy taking into account the therapy time carried out
Phototherapy time	00.00 - 99.50 hh.mm
Numbers of cycles	2 - 10 N'
Lighting	4 WHITE POWER LED
Optical unit life	> 20.000 h
Temperature control	Automatic, Manual, Pre-heating
Heating Automatic	Temperature regulation 23-38 °C
Heating Manual	Temperature regulation level (10%)
Pre-heating	Heating set at 30%
Ceiling lamp size	28x12x88 cm - 8 Kg
Stand dimension	68,5x62x(153-178)cm - 26 Kg
3 Wheels Ø5 cm	2 with brake and 1 antistatic
Medical device	CE 1370

The specifications in this catalogue are indicative. GINEVRI reserves the right to make changes, without further notice, to the products described within this catalogue in order to improve reliability, function or design.