

**G/NEVR/**  
neo-tech for life

**NAOS**  
*LED Phototherapy Lamp*



The new **NAOS** Lamps are the product and result of recent studies carried out on the **efficiency of the new Power LEDs** for the treatment of **hyperbilirubin in newborns**. The research in this field has permitted the creation of a **new line of GINEVRI** phototherapy lamps.

The new lamps are equipped with **6 Power Blue LEDs** for treatment of **jaundiced** newborns which emit **light energy** in wavelengths centred around **455nm**. The **resulting power**, 5 or 6 times more than the normal fluorescent lamps, greatly **increases the treatment's efficiency** with:

- irradiance max > **1.500 µw/cm2**
- area of phototherapy illumination at **80 cm of 70x40 cm2** (27x16 in 2).

**Illumination** is provided by **4 Daylight White LEDs** which make a **clear and accurate observation** of the newborn possible.

The **touch screen** display allows you to easily **set, check and view** all operating parameters and alarms present, in a clear and immediate way; it has an **electronic module** which controls all the phototherapy and illumination functions and makes it possible to **manage multiple therapy cycles**.

The control panel displays:

- The **time set** for the current therapy cycle;
- The **time remaining** of the therapy cycle;
- The **total therapy time**;
- The lamp **lifetime**;

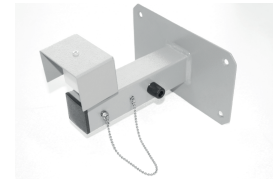
This lamp can be **positioned on the incubators or mounted** on a dedicated **height adjustable stand** (optional) with a **Y base** which makes it **more manoeuvrable** also in very **crowded crèches** and simplifies the positioning of the lamp above the incubators.



## Accessories & Consumables



**12129A70**  
Stand (135-180 cm)



**12423A70**  
Wall support



**12423A70**  
Phototherapy Mask (50pcs)



**12172A73**  
Optical Unit -  
Phototherapy and  
Illumination Leds (2pcs)



**1749**  
Radiometer RM400

## Technical specifications

MPG Class	II B (93/42 CEE e s.m.i.)
Safety	I (EN 60601-1)
Power supply	230 Vac; 50-60 Hz 100VA max
Display	Safety pin with gripping device 100 VA max 4.3" color touch screen
Phototherapy	6 BLUE POWER LED (425-475nm)
Mode 1	allows to set the phototherapy time.
Mode 2	allows to set the phototherapy time, the pause time and number of cycles
Mode 3	allows to carry out phototherapy taking into account the therapy time carried out
Lighting	4 WHITE POWER LED
Optical unit life	> 20.000 h
Ceiling lamp size	28x12x64 cm - 6 Kg
Stand dimension	68,5x62x(153-178)cm - 24 Kg
	3 wheels Ø5 cm 2 with brake and 1 antistatic
Medical device	CE 1370

The specifications in this catalogue are indicative. GINEVRI reserves the right to make changes, without further notice, to the products described within this catalogue in order to improve reliability, function or design.